

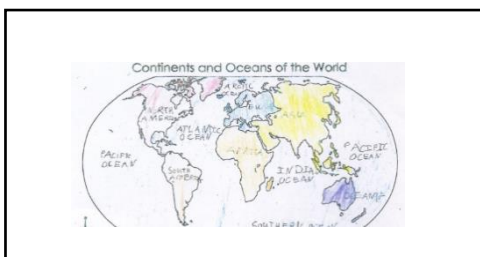


Jerry Clay Academy

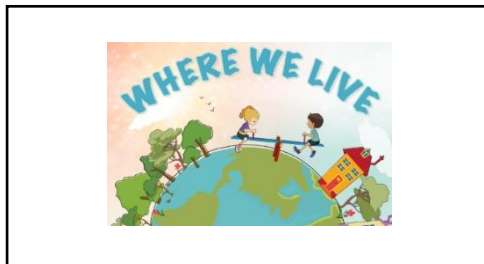
Subject Unit Overview Subject: Geography Year Group: 1 Term: Spring

Seasides

Main strands within this Geography unit:



Locational knowledge – children will continue to embed knowledge about location and capital cities of the UK. They will learn about surrounding seas.



Place knowledge – pupils will learn about features of the seaside.



They will identify some human and physical features of the seaside.



Jerry Clay Academy Subject Knowledge Organiser

Seasides

Subject: Geography Year Group: 1 Term: Spring

Core Learning of This Unit:

- Reminder of where UK is. Which continent? Focus on naming and locating 1. The North Sea · 2. The English Channel · 3. The Celtic Sea · 4. The Irish Sea · 5. The Atlantic Ocean. What is a seaside? Where are some seaside towns near us?
- What are some physical and human features of sea sides? Learn Geographical vocabulary for describing and explaining features - beach, cliff, weather, season, port, harbour, shop
- Locate some sea sides near us and the UK.
- Explore/investigate a seaside town e.g. Filey, Blackpool. Use a variety of maps to virtually explore these.
- Are all sea sides the same? Compare 2 photos of sea sides to identify similarities and differences.
- What is it like to live in a seaside town? How is this different to the physical/human features of Wrenthorpe?

Fieldwork – possible visit to seaside. Look at maps before trip – identify route you will take and look at Google Maps. What physical and human features can you spot on the beach? Children record data. What can you see and do at the seaside? Virtual fieldwork question: What can you see and do at the seaside? Use a variety of maps to virtually visit the seaside.

Prior Learning:

EYFS: Children will have talked about past and present events in their own lives and family members. They identify similarities between themselves and families, communities and traditions.

They know about similarities and differences in relation to environment, places and living things.

National Curriculum Statements:

Locational knowledge

name and locate the world's 7 continents and 5 oceans
name, locate and identify characteristics of the 4 countries and capital cities of the United Kingdom and its surrounding seas

Place knowledge

understand geographical similarities and differences through studying the human and physical geography of a small area of the United Kingdom, and of a small area in a contrasting non-European country

Human and physical geography

use vocabulary to refer to: key physical features, including: beach, cliff, coast, forest, hill, mountain, sea, ocean, river, soil, valley, vegetation, season and weather and human features, including: city, town, village, factory, farm, house, office, port, harbour and shop

Geographical skills and fieldwork

use simple fieldwork and observational skills to study the geography of their school and its grounds and the key human and physical features of its surrounding environment

Key Vocabulary:

- British Isles -Great Britain, Ireland and all nearby islands.
- United Kingdom- England, Scotland, Wales and Northern Ireland.
- Coast-The land next to the ocean.
- Capital city-The main city in a country, usually where the Government is located.
- Beach
- Cliff
- Weather
- Season
- Port
- Harbour
- Shop