

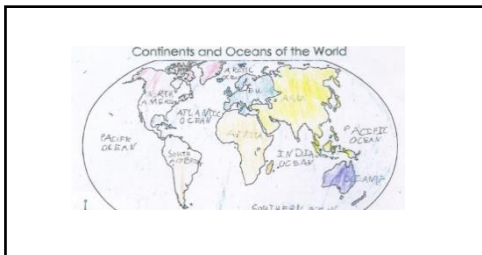


Jerry Clay Academy

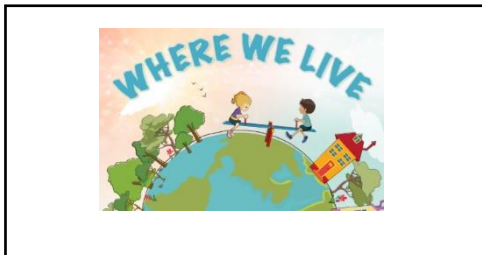
Subject Unit Overview    Subject: Geography    Year Group: 3    Term: Autumn

Theme: The Lost World

### Main strands within this Geography unit



Locational knowledge – children will continue to learn about continents and terms such as Northern hemisphere, equator etc.



Place knowledge – Children will learn different rock formations in the UK such as Cheddar Gorge. They will also learn about The Great Barrier Reef.



Physical geography – children will learn about volcanoes and the causes of these. They will discuss changing coastlines and compare these to the past.



Environmental issues – children will learn about human impact on The Great Barrier Reef and how we can protect this.



Comparison – children will compare 2 coastlines



## Jerry Clay Academy Subject Unit Overview

Subject: Geography Year Group: 3 Term: Autumn

### Core Learning of This Unit:

- To locate in the UK where there is evidence of the Stone Age. Where are different landmarks in the UK? These should include Newgrange, Cheddar Gorge, Skara Brae and Stonehenge
- Recap UK and continents. Begin to introduce latitude, longitude, Equator, Northern Hemisphere, Southern Hemisphere, the Tropics of Cancer and Capricorn, Arctic and Antarctic Circle, and time zones (including day and night)
- Where did Mary Anning find fossils? Why along the coastline? Identify where fossils have been found over the globe. Include e.g. woolly mammoths. Start to discuss how and why do coastlines change over time? Include White Cliffs of Dover and Siberia (Russia)
- Know about the Great Barrier Reef and how this is changing. How have humans affected this?
- Create booklet/postcard to explain differences between 2 coastline locations using explanations, maps etc.
- To understand how volcanoes happen and how these affect people's lives

### Prior Learning:

From KS1: Children should know capital cities of the UK and continents and oceans of the world.

They will have some knowledge of a seaside town.



### National Curriculum Statements:

#### Locational knowledge

locate the world's countries, using maps to focus on Europe (including the location of Russia) and North and South America, concentrating on their environmental regions, key physical and human characteristics, countries, and major cities

name and locate counties and cities of the United Kingdom, geographical regions and their identifying human and physical characteristics, key topographical features (including hills, mountains, coasts and rivers), and land-use patterns; and understand how some of these aspects have changed over time

identify the position and significance of latitude, longitude, Equator, Northern Hemisphere, Southern Hemisphere, the Tropics of Cancer and Capricorn, Arctic and Antarctic Circle, the Prime/Greenwich Meridian and time zones (including day and night)

#### Place knowledge

understand geographical similarities and differences through the study of human and physical geography of a region of the United Kingdom, a region in a European country

#### Geographical skills and fieldwork

use maps, atlases, globes and

### Key Vocabulary:

**Landmark** - an object or feature of a town or city which makes it recognizable  
**Tropic of Cancer** - an imaginary latitude line located above the equator that runs across the globe

**Tropic of Capricorn** - an imaginary latitude line located below the equator that runs across the globe

**Arctic** - Regions around the North Pole.

**Antarctic Circle** - Line of latitude around the Earth near the South Pole

**Time zones** - Regions on Earth that use the same time, based on boundaries of countries or lines of longitude.

**Coastline** - Area where the land meets the sea

**Great Barrier Reef** - Located off Australia, the world's largest coral reef system.

**Volcano** - as mountain or hill with an opening, that allows hot lava, volcanic ash, and gases to escape from a magma chamber below the surface.

**Magma** - Molten or hot liquified rock found deep in the Earth.

**Lava** - hot liquified rock that flows from a volcano

**Vent** - Locations from which lava flows from the volcano

**Magma chamber** - a large underground pool of molten rock found beneath the surface of the earth.

**Types of volcanoes** - 3 main types of volcano - composite or strato, shield and dome.

**Significant People** - Captain James Cook was a British explorer, navigator, and cartographer. He was also a captain in the Royal Navy. He was born on November 7, 1728 in the village of Marton in Yorkshire, England. He got his first taste for sailing as a merchant navy apprentice. During this time Cook studied algebra, geometry, navigation, and astronomy. These were skills that would be necessary one day if he were to command his own ship. In 1755, Cook was offered command of his own vessel. Instead of accepting this opportunity, he decided to join the Royal Navy. In 1766 the Royal Society chose Cook to command the HMS *Endeavour* on an expedition to the South Pacific to observe a rare transit of Venus across the Sun. The expedition also had a secret motive to search for the fabled southern continent of Terra Australis.