



Sunday 10<sup>th</sup> May 2020



Dear Parents & Carers

Tonight we all eagerly awaited our Prime Minister's announcement for the next stages of the COVID-19 exit plan. The government believes it **"may be in a position"** to begin the phased reopening of schools **from June 1st should the 5 tests be met**. This **"may"** begin with Reception, Year 1 and Year 6.

Please be assured that we will await more detailed guidance from the government and keep you all fully informed as we move along the journey to possibly reopening to some year groups. Our leadership team are already working rigorously to ensure plans are in place to safely support our children, staff and parent community if this happens. As Headteacher, I need to know that we can fulfil this requirement safely & will be doing all I can to be assured by this.

I completely understand that this creates uncertainty, so please know that we will be as clear as we can moving forward (when more guidance from the Government is given) on essential safety measures & share our plans with you all.

With kind regards,

Mrs. T Swinburne  
Executive Headteacher

Jerry Clay Lane  
Wrenthorpe  
Wakefield  
WF2 0NP

Tel: 01924 303 665  
Email: [headteacher@jerryclayacademy.wakefield.sch.uk](mailto:headteacher@jerryclayacademy.wakefield.sch.uk)  
Web: [www.jerryclayacademy.wakefield.sch.uk](http://www.jerryclayacademy.wakefield.sch.uk)



National Support School  
designated by



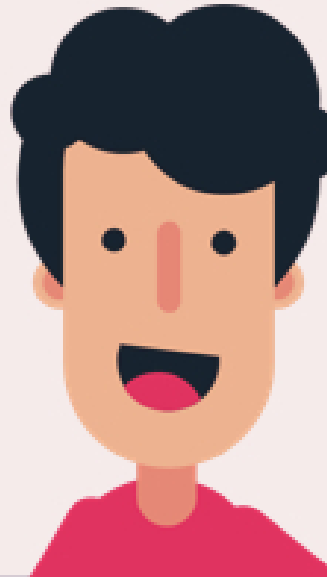
National College for  
Teaching & Leadership



Executive Headteacher: Mrs T Swinburne

Jerry Clay Academy is a charitable company limited by guarantee registered in England & Wales.  
Registered address: Jerry Clay Lane, Wrenthorpe, Wakefield, WF2 0NP. Company number: 07688230

**Your class teacher will leave you a message each day with your learning instructions.**



Jerry Clay Academy About Us • News and Events • Curriculum • Useful Info

**Every day there will be a pre-recorded lesson from your class teacher.**

English

Maths

Jerry Clay Academy About Us • News and Events • Curriculum • Useful Info

**You will have a variety of lessons to choose from across the week.**

SCIENCE

Music

HISTORY

Geography

Jerry Clay Academy About Us • News and Events • Curriculum • Useful Info

**There will be Lion King Dances from Miss Hoyte each week for KS1 and KS2.**



**Lessons will be available all day to fit in with your own personal timetable.**

Activate Wi  
Go to Settings t

Tomorrow you will receive a text message with a link to go to our new JCA Virtual School. On here you will find your child's suggested timetable and overview of learning for the week. Your Teachers will be posting even more lesson guidance videos for English and Maths daily on Seesaw and Tapestry to further assist your child's understanding. On our centralised Virtual School your child will be able to access all of the weekly lessons for our wider curriculum. These include Dance, Spanish, Science, Geography, History, Art, Music and well being. You will find links to all the websites we also use in school. This keeps everything in one place & easily accessible for you all. Please follow the link here: <http://jerryclayacademy.wakefield.sch.uk/virtual-school/>

# Launching our JCA Virtual School

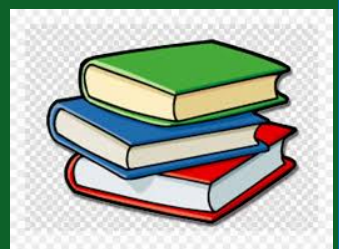


**STATIONERY PACKS WILL BE ISSUED ON  
MON 11TH, TUES 12TH OR WED 13TH MAY  
FROM 9AM UNTIL 3PM  
MATHS WORKBOOKS & BOOK SWAPS WILL  
BE AVAILABLE AT COLLECTION POINTS TOO**

During week beginning 11th May we will be issuing stationery packs.



Reading books & work books will also be available for collection during this week.



Your child's name will be on the stationery set to take. These will be clearly set out on class tables.



Don't forget to pick up a roll of large craft paper! 1 roll per child.

