



Welcome to
JERRY CLAY ACADEMY





Exciting learning opportunities to
enthuse
learning for life.

The Year 2 team

- Miss Mitchell



- Mrs Wilkinson



What to expect from Year 2



- An expectation that all children will show a good work ethic, each day.
- A 'step-up' from Year 1.
- Developing and embedding some skills that have already been taught – breadth.
- An increased expectation of independence.
- Homework set weekly.
- SATs



Curriculum Coverage

The new National Curriculum 2014 - Year 2

ENGLISH

Reading

- Develop phonics until decoding is secure and reading fluent
- Read by blending sounds
- Read words of 2+ syllables containing taught GPCs; words with common suffixes; common 'exception' words
- Read frequently encountered words quickly and accurately
- Read and reread books at appropriate level
- Discuss fiction, non-fiction and poetry beyond own reading level
- Discuss order of events
- Become familiar with and recall stories
- Read non-fiction books structured in different ways
- Recognise simple recurring literary language
- Discuss word meanings and favourite words/phrases
- Learn most poems by heart, reciting some
- Draw on prior knowledge to make sense of texts
- Check for sense and correct reading errors
- Make inferences and predictions
- Ask and answer questions
- Discuss books, poems and other texts
- Explain their understanding of texts

Writing

- Spell by segmenting into phonemes
- Learn new ways of spelling phonemes and some common homophones
- Spell common 'exception' words and more confidently
- Use the singular possessive apostrophe
- Distinguish between homophones and homographs
- Add suffixes to spell longer words
- Learn and apply spelling rules in Appendix 2

Reading (continued)

- Write simple detailed sentences
- Use letters and spaces of appropriate size
- Start using pre-writing strokes
- Write in different genres and for different purposes
- Plan ideas for writing
- Record ideas sentence by sentence
- Make simple additions and changes after proofreading
- Learn and use the grammar and terminology in Appendix 2
- In own writing use: sentences with different forms; expanded noun phrases; present and past tenses correctly; subordination and co-ordination; some features of written Standard English

Spoken language

- Listen and respond appropriately
- Ask relevant questions
- Build vocabulary
- Articulate and justify own ideas
- Describe, explain and narrate for different purposes; express feelings
- Participate actively in conversations
- Speculate, hypothesise and explore ideas
- Speak clearly and fluently in Standard English
- Take part in discussions, presentations, performances, role-play, improvisations and debates
- Keep listeners interested
- Explore different viewpoints
- Communicate effectively using appropriate register

SCIENCE

- Differentiate between living, dead and non-living
- Identify living things in their habitats; know they are suited to their habitat and are interdependent
- Describe feeding relationships using simple food chains
- Observe seeds and bulbs growing
- Understand plants need water, light and warmth
- Know all animals have offspring that grow into adults
- Understand animals need water, food and air
- Describe the importance for humans of exercise, balanced diet and hygiene
- Identify and compare uses of materials
- Explore changing the shape of solid objects

Working scientifically

- Ask simple questions
- Observe closely
- Perform simple tests
- Identify and classify
- Suggest answers to questions
- Gather and record data

DESIGN AND TECHNOLOGY (KS1)

- Design purposes, functional and appealing products
- Generate, develop, model and communicate ideas
- Select them and use a range of tools and materials
- Evaluate existing products and own ideas and products
- Build and improve structures
- Explore and use mechanisms (e.g. levers, wheels)
- Prepare plans using principles of a healthy diet
- Understand where food comes from

COMPUTING (KS1)

- Understand use of algorithms
- Write and test simple programs
- Use logical reasoning to make predictions
- Create, organise, store, manipulate and retrieve digital content
- Recognise uses of IT beyond school
- Communicate online safely and respectfully

PHYSICAL EDUCATION (KS1)

- Master and apply basic movement skills
- Participate in team games
- Perform dances using simple movements
- KS1 or KS2 Swims at least 25 metres; use a range of strokes; perform self-rescue

ART AND DESIGN (KS1)

- Use a range of materials
- Use drawing, painting and sculpture
- Develop techniques of colour, pattern, texture, line, shape, form and space
- Learn about a range of artists, craft makers and designers

MUSIC (KS1)

- Sing songs and speak chants and rhymes
- Play tuned and untuned instruments musically
- Listen to and understand a range of live and recorded music
- Make and combine sounds musically

LANGUAGES

- Not required at Key Stage 1

GEOGRAPHY (KS1)

- Name and locate the world's continents and oceans, the UK's coastline, seas and capital
- Compare a UK locality with one outside Europe
- Identify weather patterns in the UK; locate hot/cold areas of the world
- Use basic geographical vocabulary to describe physical and human features
- Use world maps, atlases and globes
- Use the four points of the compass and locational/directional language
- Recognise features on aerial photos and plans; devise a map with symbols and key
- Study the immediate environment

HISTORY (KS1)

- Changes within living memory
- Significant events (national and international) beyond living memory
- The lives of significant people (some paired to compare same aspect of life in different periods)
- Local history

MATHEMATICS

Number

- Count in 2s, 3s, 5s and 10s
- Use place value
- Identify, represent and estimate numbers
- Compare and order numbers 0 to 100; use < > =
- Read and write numbers to at least 100 in numerals and words
- Know number facts to 20 and derive related facts to 100
- Add and subtract using concrete, pictorial and mental methods
- Recognise addition is commutative
- Recognise and apply inverse relationship between addition and subtraction
- Know 2, 5 and 10 times tables; write facts using \times , \div and $=$
- Recognise multiplication is commutative
- Recognise, find, name and write $\frac{1}{2}$, $\frac{1}{4}$, and $\frac{3}{4}$
- Recognise equivalence of $\frac{1}{2}$ and $\frac{2}{4}$
- Solve problems related to place value

Measurement

- Choose and use appropriate standard units
- Compare and order length, mass, volume/capacity; record using <, > and =
- Use E and P signs; combine coins to a given value and find different combinations
- Solve problems involving adding/subtracting money
- Compare and order time intervals
- Tell time to nearest five minutes
- Know the number of minutes in an hour/hours in a day

Geometry

- Identify and describe 2D and 3D shapes
- Identify 2D shapes on surfaces of 3D shapes
- Compare and sort common 2D and 3D shapes and everyday objects
- Arrange shapes in patterns/sequences
- Use vocabulary of position, direction and movement

Statistics

- Interpret and draw simple pictograms, tally charts, block diagrams and tables
- Ask and answer comparison and totaling questions

Curriculum Coverage

Some of the main elements:

English - Writing

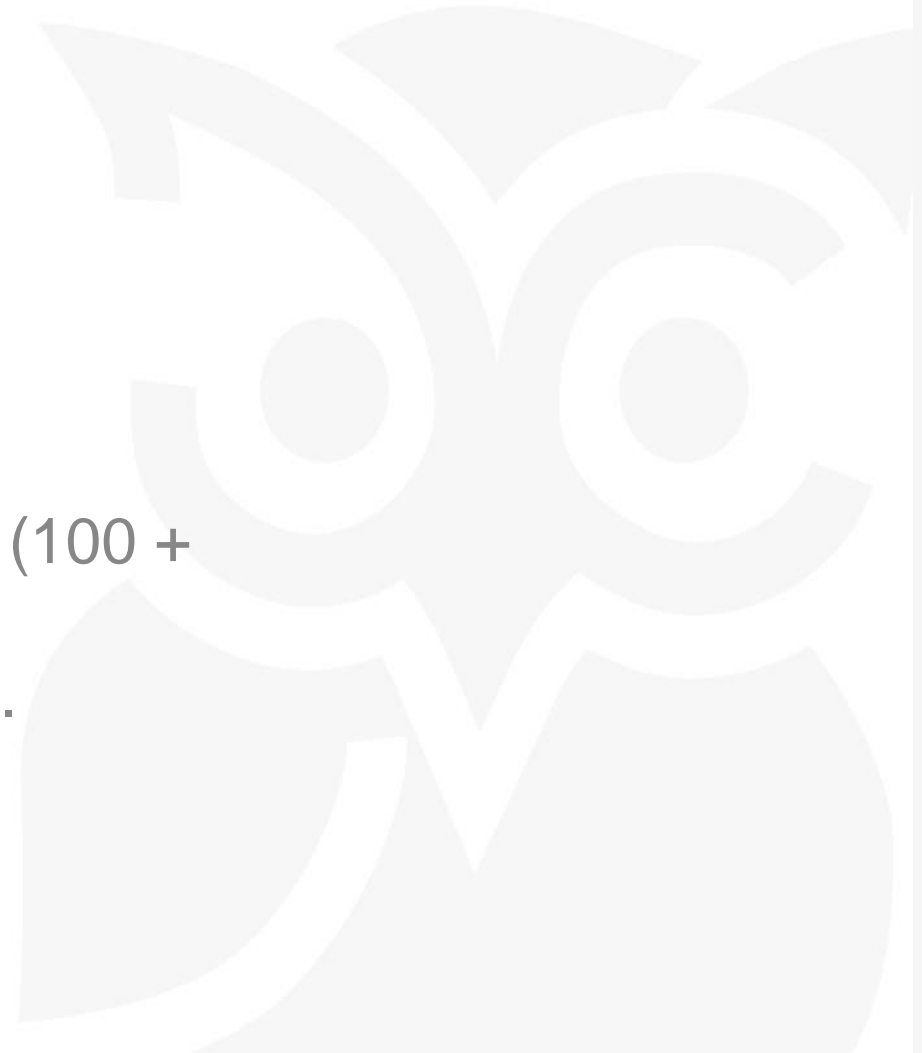
- Spelling
- Punctuation
- Planning their own writing
- Using tenses correctly

English – Reading

- Ability to decode words.
- Fluent reading - read confidently and at speed (100 + words per minute)
- Comprehending - ability to understand the text.

Maths

- 2, 3, 5 and 10 times tables
- Fractions (Some basic equivalent fractions)
- Time, shape, data



Weekly Timetable

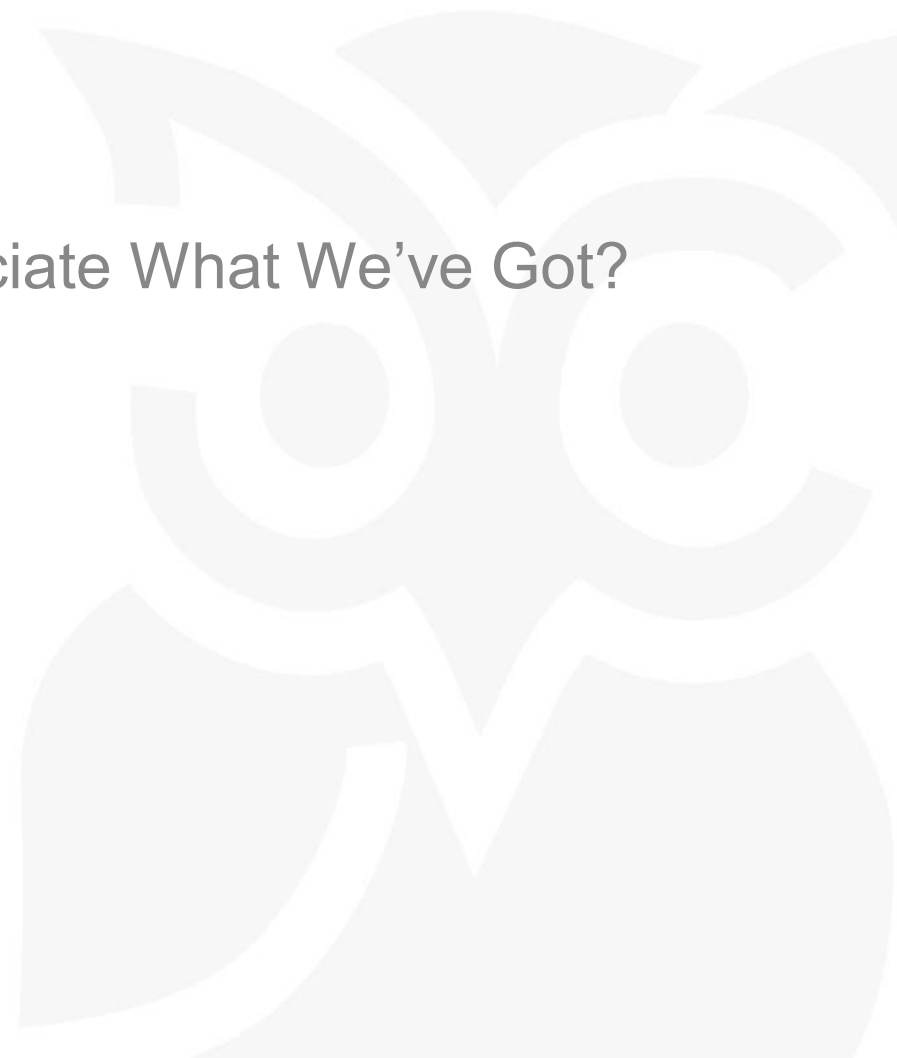
	9:10-10:10	10:05 - 10:30		10:45 - 11:55		1:00-1:20	1:20-2:20		2:30-3:25
Monday	Themed Assembly	Literacy/RWI		B	PE Hall	L	Guided Reading	B	Topic
Tuesday		Literacy/RWI	Visitor Assembly	R	Maths	U	Guided Reading	R	Computing Laptops
Wednesday	Music	Singing Assembly	E	Literacy/RWI	N	Spelling Test	E	Wise Time	
Thursday	Literacy/RWI	Key Stage 1 Assembly	A	P.E	C	Guided Reading	A	Maths Diamond Dash	
Friday	Literacy - Comprehension	Special Mentions Assembly	K	Maths (Compare numbers)	I	Guided Reading	K	Topic Choosing	

Topics in Year 2

Autumn Term – **Discover** - Magnificent Miners

Spring Term – **Explore** – Do We Always Appreciate What We've Got?

Summer Term – **Create** – What's The Weather



Homework

<p>KEYSTAGE 1 PHASE</p> <p>Yr1- Yr2</p>	<p>WEEKLY 1.5 HRS</p>	<p>Phonics activities based on the sounds taught</p>	<p>Weekly</p>
	<p>DAILY 15-30m.</p>	<p>Maths activity</p>	<p>Alternate weeks</p>
		<p>Spellings- 10</p>	<p>Weekly</p>
		<p>Reading book</p>	<p>Daily</p>
		<p>End of half term topic review</p>	<p>End of each half term</p>

+ Comprehension

- Homework will be set on a Thursday and will be expected to be completed by the following Wednesday.

Read Write Inc

Your child will bring home the book they have been reading in their RWinc lessons. They will know all the sounds needed to decode the words and the focus for home reading is to develop their fluency and comprehension. The book will be read for 3 / 5 nights according to which group they are in and they will then receive their next book. This will ensure confident and fluent readers.

In addition your child will choose and bring home a library book to share with you.

PE

- PE in Class 2 is on Monday and Thursday.
- Children will need dark shorts and Jerry Clay Academy t-shirts (or a white t-shirt) for indoor PE.
- Children will need a dark tracksuit for outdoor PE.
- Please ensure children have a spare pair of trainers/pumps in school.
- Earrings need to be taken out/taped up.
- Hair needs to be tied back.
- Girls are advised to have a spare pair of socks for if we do PE on a day they have tights on.

Key Dates for Year 2

- 24/9/19 – Year 2 trip to the National Coal Mining Museum
- wc 21/10/19 – ICT Innovation Week
- 13/11/19 – Year 2 Mining workshop with parents @ 9:15
- 26/11/19 and 28/11/19 – Parents Evenings
- 16/12/19 – Christmas Carols with KS2
- 17/12/19 – Year 1 and 2 Nativity @ 1:10
- 18/12/19 – Year 1 and 2 Nativity @ 9:10
- 3/3/19 – Year 2 appreciation gallery @ 9:15
- 24/3/20 and 26/3/20 – Parents Evenings
- wc 30/3/20 – Literature Week
- wc 18/5/20 – Creative Arts Week
- 26/6/20 – Sports Day
- 17/6/20 – Art Gallery
- wc 13/7/20 – Celebration Week



<http://www.jerryclayacademy.wakefield.sch.uk/website>

@JCAWakefield

Any Questions?

