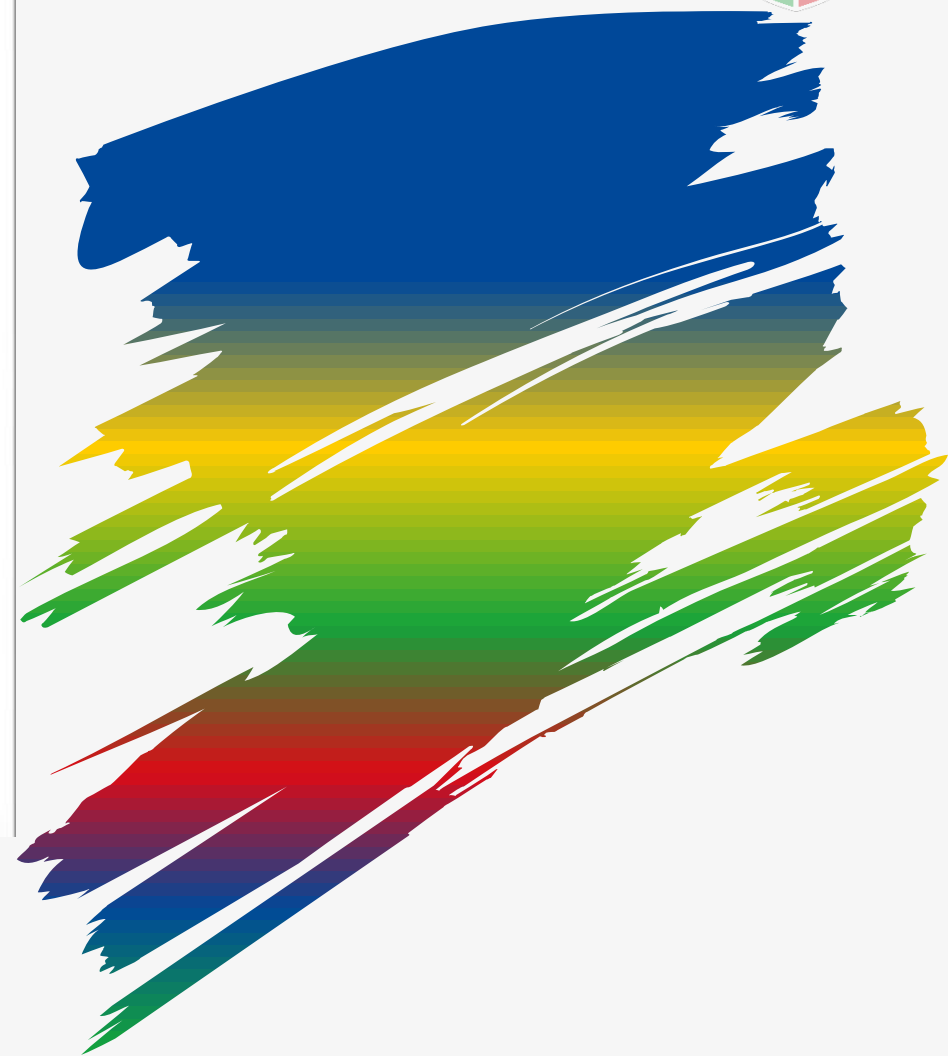




Year 6
SATs

Information Evening





<https://www.gov.uk/government/publications/key-stage-1-and-2-national-curriculum-tests-information-for-parents>



Timetable

The timetable for SATs Week is set by the Government. We can adjust timings to fit the needs of our children but we cannot change days.

Test	Date
English grammar, punctuation and spelling test Paper 1: short answer questions (45 minutes) Paper 2: spelling (15 minutes)	Monday 13th May
English reading test Paper 1: Reading comprehension (60 minutes)	Tuesday 14th May
Mathematics Paper 1: arithmetic (30 minutes) Paper 2: reasoning (40 minutes)	Wednesday 15th May
Mathematics Paper 3: reasoning (40 minutes)	Thursday 16th May

SPaG Paper

Monday 13th May



- This test is split into two parts. The first test will cover the grammar and punctuation aspects of English. The second test is a spelling test covering all of the spelling patterns learnt.
- There are several types of questions which involve ticking the correct box, punctuating sentences or writing sentences correctly.



17

Tick one box in each row to show if the underlined clause is a **main clause** or a **subordinate clause**.

Sentence	Main clause	Subordinate clause
Billie, <u>who was nine years old</u> , loved to play tennis.		
Billie's mum bought her a tennis racket <u>so that she could play more often</u> .		
Billie could not play tennis with her <u>friend Lana</u> because Lana did not have a racket.		

1 mark



21

Write a sentence using the word cover as a **noun**.
Remember to punctuate your answer correctly.

1 mark

Write a sentence using the word cover as a **verb**.
Remember to punctuate your answer correctly.

1 mark

Reading Paper

Tuesday 14th May



- This test is 60 minutes long. Your child will be given a reading booklet containing 3/4 texts. The reading booklet will include a range of texts types including fiction, non-fiction and poetry.
- There are several types of questions which involve ticking the correct box, picking out a single word or phrase or finding information directly from the text.
- Some questions will involve your child having to think about the use of a certain word or phrase. They will also be asked questions that involve asking for an explanation of the author's choices of language, technique and structure within the text.



9

Look at Anousheh's blog entry for September 27th.

Explain how Anousheh felt about being in space that day.

2 marks



15

Tick **true** or **false** in the following table to show what you should do when spotting shooting stars.

	True	False
Take warm clothes, a blanket, a pillow and a torch.		
Stay close to town.		
Point your torch up to the sky.		
You must have binoculars.		

1 mark

Maths Papers

Wednesday 16th & Thursday 17th May

- This test is split into three papers.
- On Wednesday 15th, your child will sit the Arithmetic Test and Paper 2 – a reasoning paper.
- On Thursday 16th, your child will sit the final Maths paper which also looks at reasoning style questions.
- Your child will be tested on all aspects of their mathematical knowledge.
- The Arithmetic Test focusses on your child's knowledge of the four operations and calculating with fractions and percentages.
- Paper 2 and 3 focus on reasoning/problem solving style questions.



Arithmetic Test

16 $1,440 \div 12 =$

1 mark

17 20% of 1,500 =

1 mark

29

$\begin{array}{r} 678 \\ \times 54 \\ \hline \end{array}$

Show your method

2 marks

30 $17 \times 1\frac{1}{2} =$

1 mark

Paper 2 and 3

8

Maria bakes cakes and sells them in bags.



She uses this formula to work out how much to charge for one bag of cakes.

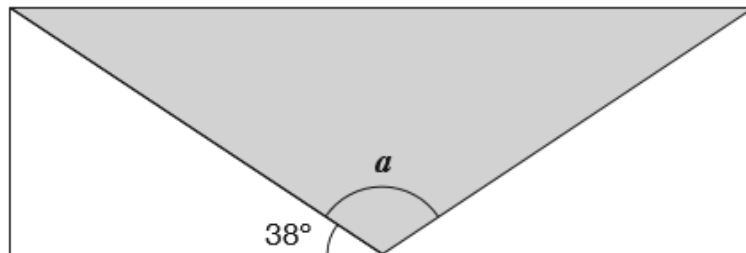
$$\text{Cost} = \text{number of cakes} \times 20\text{p} + 15\text{p for the bag}$$

How much will a bag of 12 cakes cost?

£

15

A shaded **isosceles** triangle is drawn inside a rectangle.



Not to scale

Calculate the size of angle a .

Show your method

a is °

2 marks

Marking and Results

- The tests are sealed at the end of each test and are then sent away to be externally marked.
- The results of the tests will be sent to school before the end of the Summer Term.
- As mentioned in the video, the marks your child achieves will be converted into a 'Scaled Score'. A score of 100 indicates that your child is working at the expected standard for Year 6.

How we are preparing your child to achieve their full potential:

- **Booster sessions.** These are delivered during the day and also after school.
- **Morning and afternoon tasks linked to previous or example SATs questions.**
- **Small focus group work during lessons to ensure your children are challenged and supported to further develop their knowledge.**
- **Small intervention groups during the day.** These may focus on an area that some children are finding difficult or to further develop their confidence in this area.
- **We ensure that your child still has access to the full curriculum. This is very important to our children.**
- **We do not want our children to be under any unnecessary pressure**

How you can help your child?

- Ensure your child reads **every** day.
- Weekly **spellings** and regularly revisit previous spelling patterns and rules.
- Support your child with weekly Maths and SPAG homework.
- Encourage your child to use their revision book regularly
- Continuously go over **times tables and finding percentages/ fractions of numbers.**
- Ensure that your child is getting enough sleep!

Any
questions?